

# Welcome!

## Supercharge Student Engagement in a 'Hy-flex' Fall

*For the best experience,  
watch on your computer  
while using the iClicker  
student app on your  
smart device.*



During the webinar you will have the opportunity to participate using the iClicker student app.

1. **Download** the iClicker student app for iOS or Android from the **iTunes** or **Google Play** stores, or visit **iClicker.com** to vote using your computer's web browser.
2. **Sign in** with your existing instructor account credentials or **create a new account**.
3. **Join** this webinar's course (below) to participate in polls:

Institution: **Macmillan Learning**

Course: **Supercharge Student Engagement**

Instructor: **Natalie Dougall**

# Supercharge Student Engagement in a 'Hy-flex' Fall

---

Natalie Dougall, Training Specialist & Faculty Advocate

Mandy Shaffer, M.Ed., Director of Sales, Institutional Initiatives



# Supercharge Student Engagement in a 'Hy-flex' Fall

- Anticipating a Hy-flex Fall
- Join Our iClicker Session
- iClicker Polling Question Demo
- iClicker Insights
- Thank You For Attending-- *Bonus: Free Content!*

# Anticipating a Hy-flex Fall

## Engage & Understand Students - **Anywhere**

- iClicker brings active learning to **online, hybrid** and **in-person** classrooms

## Discover Student Preparedness & Motivation - **Anytime**

- Before Class:
  - Get students prepared to learn with **Assignments**
- During Class:
  - Make passive classes active with **Polling**
- After Class:
  - Know more about your student's experience with **Exit Polls**
  - Help students study smarter with **Study Tools**

# Anticipating a Hy-flex Fall

## Teachers' concerns:

1. How can I know early on where obstacles to student preparedness & motivation may exist?
2. How can I know if my students are attending class?
3. How do I maintain a learning environment where students feel comfortable engaging with one another?
4. How can I provide efficient support for asynchronous learning?
5. How can I quickly know where the 'muddiest points' are in the content that we cover?
6. How can I support student self-study and focus on key concepts from class?

## How iClicker can help:

1. Learning about students before class with **iClicker Assignments**
2. Get students to class with **iClicker Attendance**
3. Ask **iClicker Polling** questions using Anonymous mode or share iClicker Polling results using aggregate answers like word clouds to connect students
4. Use **iClicker Assignments** to make asynchronous classes interactive
5. End classes using **iClicker Exit Polls**
6. Encourage students to study smarter with **iClicker Study Tools**

# Join Our iClicker Session!

1. Sign in as a student at iClicker.com or through the iClicker app
2. Add our course

**Institution:** Macmillan Learning

**Course:** Supercharge Student Engagement

Or click our quick join link:

1. <https://join.iclicker.com/H92XN>  
(link in the chat)



**JOIN OUR  
POLLING  
SESSION NOW!**

Institution:  
**Macmillan  
Learning**

Course Name:  
**Supercharge  
Student  
Engagement**

Instructor:  
**Natalie  
Dougall**  
Macmillan  
Learning

## How are you teaching this fall?

**A.** In-Person

**B.** Hybrid

**C.** Online Only - Asynchronous

**D.** Online Only - Synchronous

**E.** I'm not teaching this term

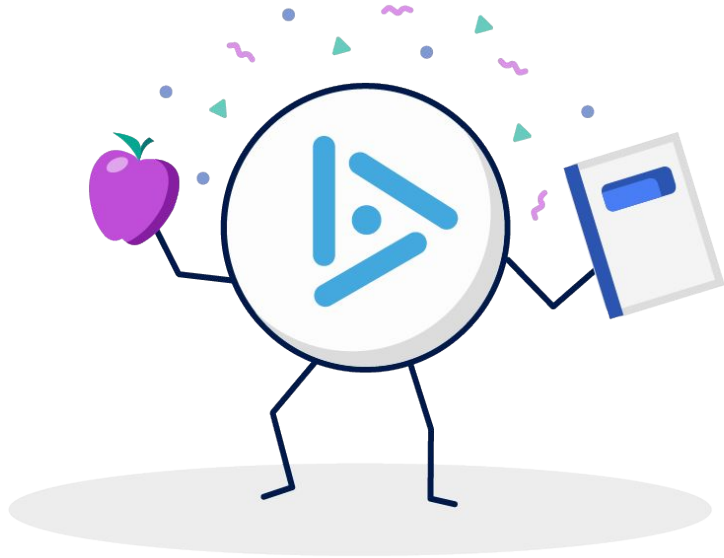
# Short Answer

---

How do you define active learning?



# Passive Learning vs. Active Learning



## Passive Learning:

- Instructors present information
- Students listen and take notes
- Class is a one-way conversation

## Active Learning:

- Instructors involve students in the lesson
- Students learn by doing
- Class is a two-way conversation

# Target

**Which  
student isn't  
going to  
finish this  
course?**





# iClicker Insights

**A New Approach to Making Students Successful**

# Perception is Reality

Each individual has  
his or her own  
perception of reality.

Our perceptions  
profoundly  
impact how we  
experience life.



4.0 GPA

Attends  
every class

High ACT/SAT  
scores

"I'm not motivated to do well in this class."

"I have so many commitments I'm trying to juggle."

"I don't know where to go for help."



# Multiple Choice

Who is responsible for student success on your campus?

- a. instructors
- b. staff, such as advising
- c. student retention leaders/admins
- d. everyone
- e. students



# Research-Based Surveys

Curated by Macmillan's Research Team

---



**30+**  
years of research



**150+**  
institutions



**1M+**  
college students

# Short Surveys, Quick Interventions

## Identify Students with Intervention Surveys

### Readiness Survey

*9 questions*

### Academic Recovery Survey

*15 questions*

### Student Success Survey

*15 questions*

### Check-In Survey

*12 questions*

## Measure Results with Outcomes Surveys

### Non-Returner Survey

*12 questions*

### Term Outcomes Survey

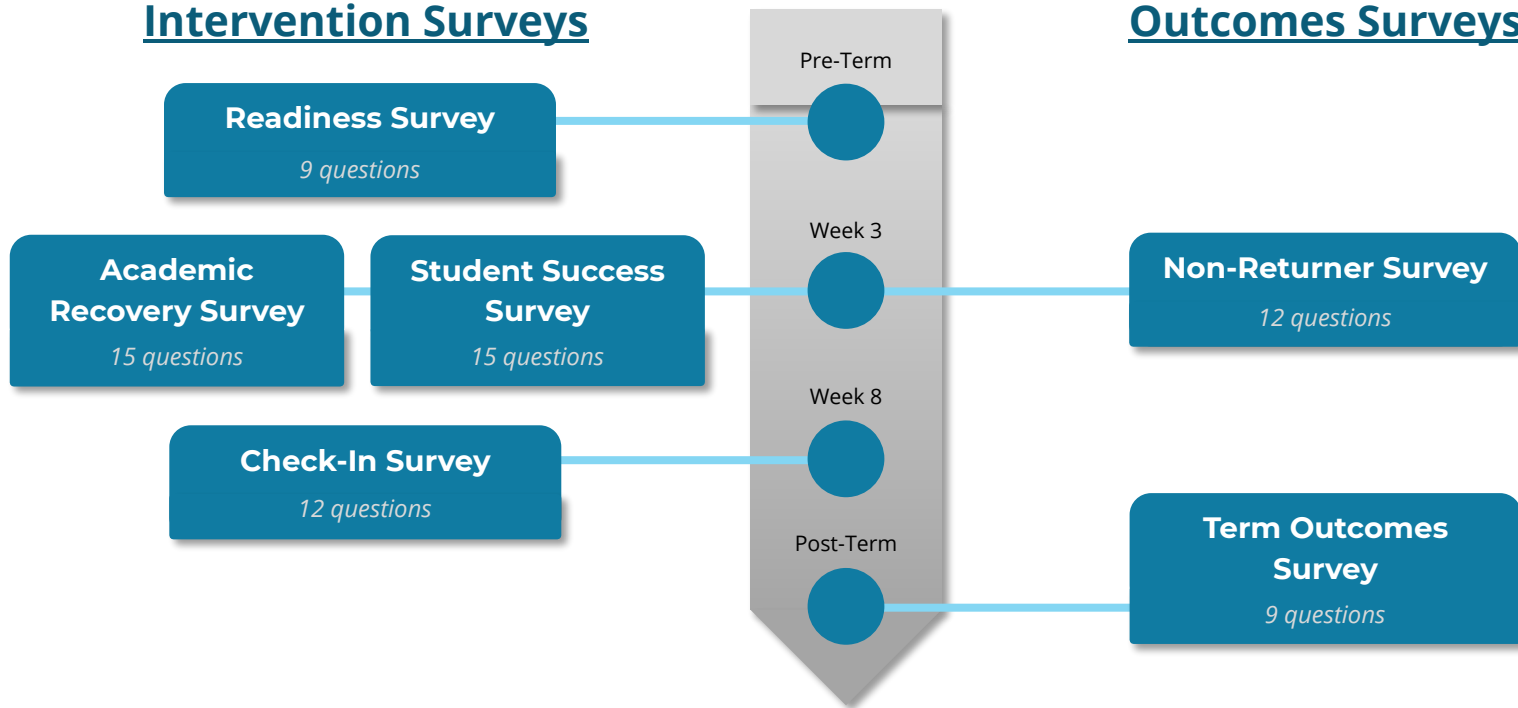
*9 questions*

Pre-Term

Week 3

Week 8

Post-Term





# iClicker's Class Readiness Activity:



Understand the **academic expectations, motivations, and behaviors** of the students in your course.

Collect **actionable data** to set students up for **academic success.**

## Class Readiness Activity for Instructors

---

- Academic Motivation
- Academic Preparation
- Perseverance
- Resilience
- Time Management
- Note Taking
- Knowledge of Campus Resources
- What do you want to learn?
- What are you most worried about with this course?

# How It Works

---



**Create an iClicker  
Assignment**  
(or use it as a poll  
during class)

---



**Upload the PDF of  
the survey and  
assign to students**

---



**View Responses,  
assist students as  
needed, or escalate  
to another team**

---

## After This Webinar

You'll receive an email with a link to this recording and the free Class Readiness Survey

Contact us at [email@iclicker.com](mailto:email@iclicker.com) with any questions!

OR Sign up for a demo at [iclicker.com](https://iclicker.com)!

**Questions? Comments?**

**Thank You!**